



2023 Afton Motorsports Park Modified Rules & Procedures

BALLAST WEIGHT: All lead ballast weight must be mounted between the frame rails using proper clamps with one (1) grade-8 bolt required for every 10 lbs. of lead being held. All lead should be painted white with and labeled with car number. No filling rubrails or body mounts with lead or other type of material. Weight is not permitted in axle tubes. No steel axle tubes.

BODY RULES: Sail panels must be even and mirror each other in size and shape, side-for-side.

Maximum height when measured from the ground is 65 inches. Sail panels must extend no further forward than the rear of the driver's seat and no further back than the end of the quarterpanel. *There will be no alterations (louvers, cut-outs, etc.) permitted to the sail panels.* A roof spoiler/wickerbill, no taller than four inches, is permitted.

Door heights are as follows: maximum height of 41 inches on the left side and 40 inches on the right when measured 60 inches forward from the centerline of the rear axle.

Left-Side Measurement Points:

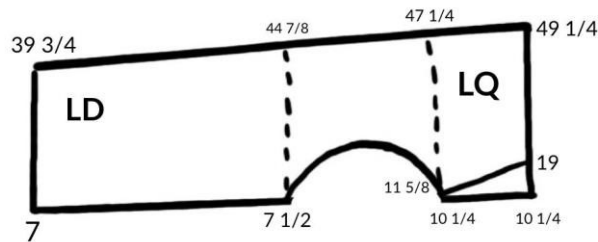
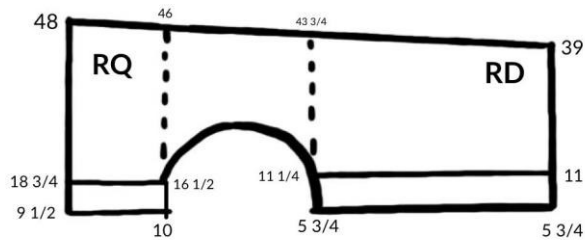
16 inches forward from centerline of rear axle: 45 inches maximum, 37 inches minimum
60 inches forward from centerline of rear axle: 41 inches maximum, 36 inches minimum

Right-Side Measurement Points:

16 inches forward from centerline of rear axle: 44 inches maximum, 36 inches minimum
60 inches forward from centerline of rear axle: 40 inches maximum, 35 inches minimum

There cannot be more than a one-inch difference from left door to right door in split when measured from the ground.

Please reference the diagram below for door dimensions:



ALL TO THE GROUND
 REAR FRAME HEIGHT 6 1/2
 FRONT FRAME HEIGHT 5 3/4

The maximum combined length of door and quarter together, front to back, is as follows:

- *Left Side:* 11 feet, 4.5 inches on the top of the combined door/quarter; 11 feet, 5 inches on the bottom of the combined door/quarter
- *Right Side:* 11 feet, 3 inches on both the top and bottom of the combined door/quarter

Rear spoiler rule maximum height: 50 inches – must be even from left to right. Minimum ground clearance of 6 inches in door skirting and 8-inch minimum for rear quarter-panel skirting.

Maximum body width, when measured at any point along the body line from front-to-back will be a maximum of 68 inches and minimum of 64 inches.

Aluminum surrounding fuel cell is optional.

*All other measurements are to mirror the standard for Northeast dirt Modified racing. **Afton Motorsports Park officials have final decision on all discrepancies.***

BRAKES: All four (4) corners must have brake calipers and rotors. Brake shut-offs are permitted. Random brake tests are possible at any time.

CHASSIS: Chassis, frame, rubrail and bumper specifications mirror those generally accepted in dirt Modified racing. Standard dirt Modified chassis only.

CONDUCT: Competitors, teams and fans of the Afton Motorsports Park are expected to act with respect toward each other and event officials at all times. Drivers and car owners are responsible for the actions of their crews. Fighting and unsportsmanlike conduct will result in loss of points, disqualifications, fines or suspensions. Team members are not permitted on the

speedway surface at any time without express permission of series officials. Team members are not permitted on the speedway surface at any time without express permission of series officials. Entering the speedway without permission will result in fines and/or suspensions.

DISQUALIFICATIONS: Drivers who are disqualified forfeit monies earned and points accrued for said event. Drivers who are disqualified will receive DNQ points for said event. In the event of a disqualification, all drivers behind the DQ car will be moved up a position and will be compensated as such with points and payout.

ENGINES & WEIGHTS: Big- and small-block engine combinations are permitted to run on the Short Track Super Series. Engines must be carbureted (no fuel injection). *Aluminum 'built' small-blocks are not permitted. Small-block engines larger than 450 cubic inches are not permitted. Big-block engines larger than 477 cubic inches and aluminum big-block engines are not permitted.*

Afton Motorsports Weight rules are as follows for the 2023 season:

- Big- and Small-Block engines: 2,400 lbs.
- PA/NJ/DIRTcar Spec Small-Block – open carburetor (methanol): 2,350 lbs.
- PA/NJ/DIRTcar Spec Small-Block – open carburetor Gasoline): 2,275

Weights are subject to change by Afton Motorsports Park Officials.

FUEL: Gasoline or methanol is permitted on the Afton Motorsports Park. VP FUELS and SUNOCO allow.

GENERAL RULES & SAFETY: The following *minimum* safety guidelines are in place for the 2023 Season.

Seat Belt/Restraint System

All cars must be equipped with a minimum of an SFI 16.5 or SFI 16.1 approved restraint system. System will be eligible for use in competition for two years from the date of manufacture or the expiration date. Seat belt systems shall be installed and used in accordance with manufacturer's instructions.

Protective Clothing

All drivers are required to wear a fire-resistant driving uniform meeting minimum SFI 3.2A/5 specification with label. Drivers must wear gloves at all times they are on the track. Driver's gloves must meet or exceed SFI 3.3 specification with label. Drivers should wear fire resistant accessories including head sock, under garments, shoes and socks. Shoes must meet the SFI 3.3 Seats

All current seats must be constructed of aluminum or approved carbon fiber. Must be installed in accordance to seat manufacturer instructions.

Helmets

All drivers must wear a full-face helmet with a minimum safety rating of Snell 2015 or newer.

Head And Neck Restraint

SFI 38.1 approved head and neck restraint recommended.

Fire Suppression System:

Fire bottle/suppression system recommended.

HEAT-RACE ASSIGNMENTS: Drivers are permitted to switch a heat race only in extreme circumstances (incident in hot laps, etc.) with express permission from the Short Track Super Series race director. Should a driver miss their assigned heat race, they will be automatically tagged onto the tail of a consolation.

LAPPED CARS: In the event of a caution flag at a Short Track Super Series event, lapped cars – in the order they are running – will drop to the rear of the field for the restart (heats, consolations and main events). In feature events only, the first driver one lap down will be waved around to the tail end of the lead lap via the 'Algonkin Motel Lap-Down, Go-Around' program. The driver causing the caution will not be eligible for the wave-around.

LINEUP CHANGES: In the event of a car "scratching" from a Short Track Super Series heat race, consolation or main event starting field, the cars behind said driver will "crisscross" to their new assigned position. The entire row will not move up.

LOCKER REARS: The use of locker rear-ends is prohibited. Solid spool rears only.

MEMBERSHIP/ENTRY FEE: A full-season Short Track Super Series North Region entry is available for \$150 and covers car registration for all North Region events. At each event, the race-day registration is a minimum \$20 on race-day or \$15 in advance (increases for special events). All entry forms for the 2023 season will be posted at www.shorttracksuperseries.com or www.shopstss.com. Drivers failing to enter/draw prior to the drivers' meeting at each event are subject to starting last in their heat race.

ONE-WAY RADIOS: One-way radios/scanners are mandatory at all Short Track Super Series events. The one-way radio frequency is 454.000.

PAYOUT: Race payouts will be available following the conclusion of racing at all Short Track Super Series events. The location of payout is the series registration trailer. To avoid additional work for track and series employees, we do ask that you pick up your payout on race night!

POINT FUND: The top-12 drivers at year-end in the North Region will share in a \$46,650 point fund. The champion is guaranteed \$15,000 and 12th -place \$1,250. The complete point fund is with label.

Seats

All current seats must be constructed of aluminum or approved carbon fiber. Must be installed in accordance to seat manufacturer instructions.

Fire Suppression System:

Fire bottle/suppression system recommended.

LOCKER REARS: The use of locker rear-ends is prohibited. Solid spool rears only.

PROTESTS: All protests must be turned into the Head Technical Inspector within 10 minutes of the conclusion of the race. The protest fee must be paid at the time of protest. Only the car owner or driver may submit the protest.

Any refusal of inspection or non-compliance with an official protest will result in the disqualification of the protested car.

If the protested car is found to be illegal, the protesting fee will be returned to the team filing the protest less the filing fee.

Any altercation relating to the incident with Officials and any other participants by the team filing the protest will nullify the objection.

Protest Fees are as follows:

Engine Teardown - \$1,000 cash bond (\$100 Protest Fee)

General Protest: \$500 cash bond (\$100 Protest Fee)

Track officials reserve the right to ask for a legality test at any time. Refusal of such by a race team will result in a disqualification. Track officials also reserve the right to deny any Protest Request.

Visual Protests may be filed up to 30 minutes prior to the start if a feature and must be accompanied by a cash bond of \$250 (\$50 Protest Fee). Officials have sole discretion as to what is considered a visual protest.

SUSPENSION: Suspension guidelines for the 2023 Afton Motorsports Park:

- The front axle in all Modifieds must be a straight, one-piece axle manufactured from magnetic steel tubing.
- Split axles, dropped axles or independent front suspension not permitted.
- A-Frames and/or ball joints will not be permitted for steering axis (kingpin only).
- Four-wheel steering by the steering wheel and/or any type will not be permitted.
- Only approved Modified front spindles permitted.
- Independent front and/or rear suspensions will not be permitted. No Cantilever suspensions allowed.
- Only conventional type closed shock absorbers and/or approved shock absorbers will be permitted for competition. Only single-shaft shock absorbers will be permitted and all shock absorbers must remain closed on one (1) end via conventional design.
- Air shocks are not permitted.
- One (1) shock per corner.
- The minimum wheelbase is 106 inches and maximum of 110 inches with a maximum tolerance of one-half (1/2) inch when measured from the centerline of the rear axle to the centerline of the front axle for both left and right sides.
- The maximum front tread width will be 86 inches with a minimum of 74 inches. The maximum rear tread width will be 86 inches and a minimum of 80 inches. These measurements will be taken from the outside edge of the sidewall of the tires on each side.

Dirt Modified suspension designs and applications are constantly evolving. The intent of the STSS is to accommodate the majority of suspension and suspension component designs being used in competition; as such the rules cannot be absolute. The Afton Motorsports Park reserves the right to approve or deny any such evolutions from those currently utilized in dirt Modified racing.

TIRES: American Racer is the exclusive tire of Afton Motorsports Park. Approved compounds are:

LEFT FRONT 33 OR HARDER

RIGHT FRONT 33 OR HARDER

LEFT REAR 44 OR HARDER

RIGHT REAR 48 OR HARDER

FOR THE FIRST 4 WEEKS LEFT REAR 38 OR HARDER AND RIGHT REAR 44 OR HARDER WILL BE ALLOWED FOR A BURNOFF PERIOD. AFTER 4 WEEKS HAVE EXPIRED YOU WILL BE DQED FOR THOSE TIRES.

Any track or series stamp is legal. **No specialty tires or block-tread tires permitted. No chemically altering of tires permitted.**

TRACTION CONTROL: The use of traction control devices is strictly prohibited. Vehicles suspect of traction control use by technical officials are subject to impound and inspection by Afton Motorsports Park.

TRANSPONDERS: AMB Transponders are required.

Transponder Mounting: Transponders must be mounted on the right side no less than 24 inches behind the rear axle centerline at a height of 12 to 18 inches from the ground. For optimum function, the transponder should be mounted as close to the ground as possible. Transponder should be mounted with no obstruction between the transponder and the ground.

TWO-WAY COMMUNICATION: Two-way communication between driver and crew is strictly prohibited. Use of two-way communication will result in disqualification from the event and loss of accrued points and monies.

ALL RULES ARE SUBJECT TO CHANGE AT ANY TIME BY MANAGEMENT OF THE AFTON MOTOSPORTS PARK TO ENSURE COMPETITIVE BALANCE. ALL OFFICIALS' DECISIONS ARE FINAL!